

How, when, and why to confront narcissistic behavior

... and yes, you can!

Dr. Ellyn Bader

*The Couples Institute &
The Developmental Model of Couples Therapy*



Treating Couples with Narcissistic Partners



- Narcissism exists on continuum from narcissistic features that we all have to narcissistic style to narcissistic personality disorder
- Narcissistic partners challenge therapists with their aggressive interactions, their demands for intimacy and their sensitivity to any confrontation.

IT IS AN ARTFUL DANCE OF GENTLE CONFRONTATIONS
TO UNCOVER VULNERABILITY, PROMOTE OTHER-
DIFFERENTIATION AND BUILD EMPATHY

Some Characteristics Of The Narcissist

- 👤 Preoccupied with status, prestige, power, adequacy
- 👤 Their sense of self and self-esteem are looked for externally
- 👤 Lack empathy
 - Unable to sense how other's feel
 - Don't have a sense of the impact they have on others
 - Are low on the continuum of **other-differentiation**
- 👤 They like to be in control.
Individuation may be over-emphasized



Couples Therapy Issues

- › Will often try to outwit the therapist and stay dominant
- › They may stay distant from therapist and resist you moving towards them
- › Partner's differences are often felt as a narcissistic injury
- › Couples therapy is a very powerful form of therapy when the narcissist has the motivation to keep the relationship



Why Narcissists Are Frustrating in Intimate Partnerships

Relationship limitations show up when they are asked to be collaborative or extend themselves in a giving or nurturing way

Only give when it is convenient for them

- Will attack when hurt. Not emotionally open.
- Won't negotiate collaborative solutions that take both partners into account.
- Won't initiate or ask for help.



Narcissist When Asked to Respond to Other



Exposes deficits in empathy



You can gently push and guide other-differentiation which is a stretch for narcissistic partners



Will attack quickly when they feel criticized



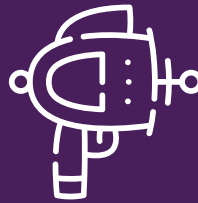
Use yourself



Your Confrontations



Are often gentle and firm and persistent



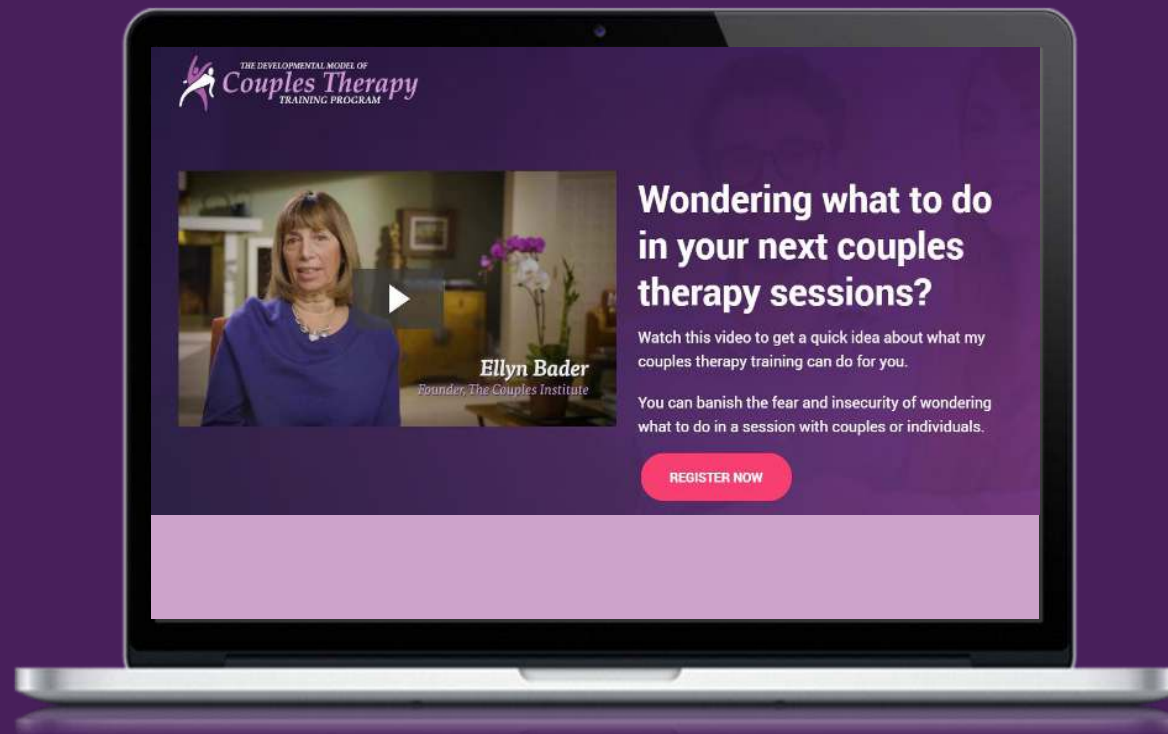
Are never in the form of control struggles-You will lose



Don't be afraid of their anger because it will come

Many of the best confrontations are in the form of describing their internal process and pain, how they hide and are not seen and what they do to themselves

Introducing a world-class 1-year training and mentoring program with a pioneer in couples therapy that will transform your practice



Questions asked in the Chat

- What is the guarantee?
- What is in October?
- How tech savvy do I need to be?
- Can I do it with a colleague?
- Will we talk about working with couples online?
- Is it tax deductible?
- Do I get CEs?
- Can I download and keep training sessions and research library?



*The Developmental Model Program
with Dr. Ellyn Bader*

Our Iron Clad Guarantee

Experience it all with no risk!



You have a **full 30-day trial** to study, listen, watch, participate, and learn!

- ✓ Explore everything for a full 30 days!
- ✓ Learn from the videos, training sessions, and experts!
- ✓ If in 30 days you don't believe this program will deliver the skills plus confidence and you believe it's not right for you, we will refund your money. No questions asked.

1 Fast-Acting Bonus: A Private Support Group with Dr. Ellyn Bader

When You Order by **Monday, Oct 5**
at **11:59pm Pacific Time** You'll Receive:



FREE
\$2,400 VALUE



This is an exclusive chance to talk with Ellyn, hear her perspective on how the Developmental Model can apply to *your* individual and couples' cases, and get ongoing personal support as you work experientially with more clients online.

2 Fast-Acting Bonus: Get 3 Months Free

When You Order by **Monday, Oct 5**
at **11:59pm Pacific Time** You'll Receive:



**15 months for the
price of 12!
That's 3 months
absolutely free.**

What the Program Includes



Full Program!



24 Written Lessons



8 Video Demos



100+ Audios Archived



Live Sessions with
Guest Experts!



Peer Groups



Ellyn's Live Training Sessions
+ Submit your cases!



Get your Questions Answered



Special Training: Trauma,
Narcissism, Passive-Aggressive
Partners and More

Why we are the preferred choice for therapists



**in only
5 to 6 hours
per month**



Work with couples more effectively with satisfying sessions that flow



Your nonverbal language communicates you have appropriate confidence to help them



You can hold steady because your interventions are deliberate and nuanced



Clients become motivated and accountable



This model takes you beyond problem solving & grateful clients return because they want more

Why other therapists love our training...



Study in your PJs 🛏️



Listen live or later
from almost anywhere



Training is sequential &
builds on itself



Build your therapy skills
over a full year



Personalized attention and
answers to your questions



Collaborate with colleagues of other
races/cultures worldwide and get help

Special Offer When You Pay For The Year

An extra \$265 off!

You won't get world class training at this price *anywhere*.



Your Investment

How much will this training cost in terms of time, energy, and money?

You need only...



**about 5 to 6 hours
per month**

Your investment...



as low as \$3.30/day

Buy Now

You Can Start Immediately

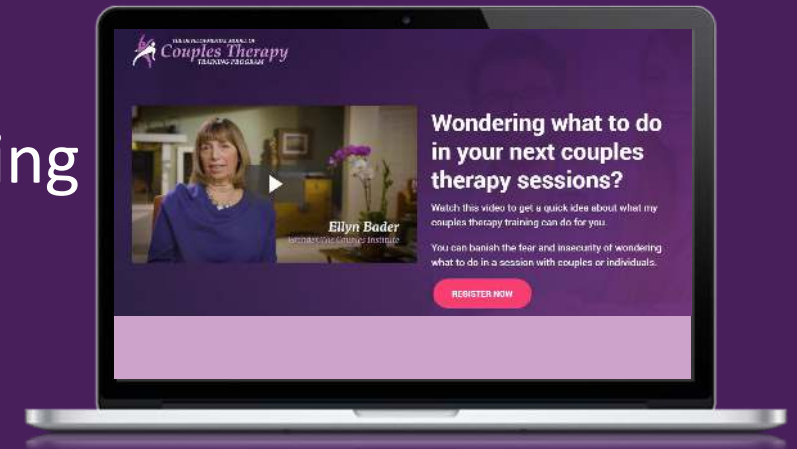


- Get the First Lesson
- Get Acquainted with the Community
- Introduce Yourself
- Submit a Case for Review
- Use some of the Handouts with Clients This Week
- Your Private Support Group w/Ellyn Starts in late October

Developmental Training Program

Our CORE Program:

- 15 Months of world-class mentoring and training
- Live Monthly Training Sessions
- 24 Written Lessons
- Submit Individual Cases for Review
- 8 Live Bonus Training Calls with other Couples Experts
- 29 Client Handouts
- Supportive Therapist Community
- Special Live Training Sessions on Working with Trauma, Narcissism and Infidelity



Plus, check out these added features:

- A research library at your disposal 24/7
- Client Session Videos
- 100 Archived Training Calls
- 82 Archived Bonus Calls with Guest Experts
- Deep Dive Special Training Calls on empathy, addiction, first sessions and more!



Incredible Value

| <i>What you receive in The Developmental Model Training Program</i> | <i>Value</i> | <i>Total Value</i> |
|--|----------------------------|---------------------------|
| 12 Live 90 Minute Training Sessions with Dr. Ellyn Bader | \$500 | \$6000 |
| 8 Live Bonus Training Calls with Guest Experts | \$350 | \$2800 |
| 8 Videos of Real Client Sessions by Dr. Ellyn Bader and Dr. Pete Pearson | \$75 | \$525 |
| 100 Plus Archived Training Sessions with Dr. Ellyn Bader | \$70 | \$7000 |
| 82 Archived Bonus Calls with Guest Experts like Dan Siegel, Esther Perel and others! | \$60 | \$4920 |
| 29 Client Handouts to Support Your In-Session Work | \$30 | \$870 |
| Being part of a Supportive Therapist Community | <i>Priceless</i> | |
| Investing in your Professional and Personal Growth | <i>Even More Priceless</i> | |

TOTAL VALUE

Over \$22,000

When you Pay in Full today,
You'll receive a total savings of \$265 and over
\$22,000 in total value!

12 Monthly Payments

You could join now for the low monthly cost of \$147.
That's significantly less than you'll receive from one
client per month.

[JOIN THE PROGRAM](#)

One-time Pay in Full Payment

Invest for the full year and get **an additional savings
of \$265**. You won't find world-class training at that
price ANYWHERE.

[JOIN THE PROGRAM](#)

Remember that this training is a tax deductible expense in many countries.

Sign Up Now!

couplesinstitute.com/developmentalmodel

